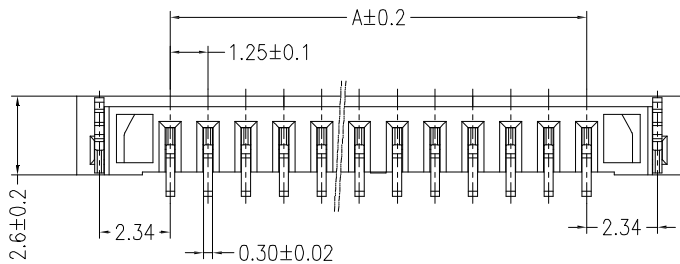
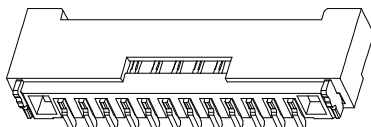
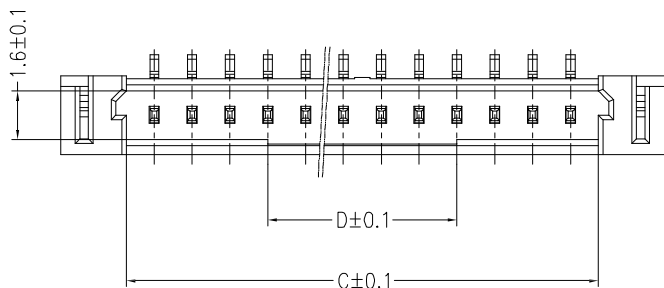
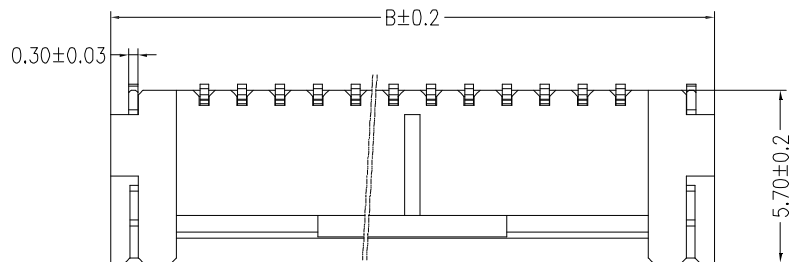
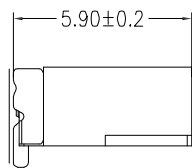


HSF RoHS

REV	ECN NO	DESCRIPTION	DATE	NAME
A	—	NEW	11/28-'19	LZM

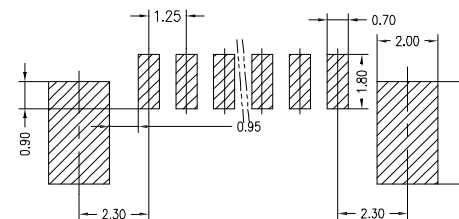


0.10



孔位	DIM A	DIM B	DIM C	DIM D
2Pin	1.25	7.45	3.05	2.50
3Pin	2.50	8.70	4.30	3.00
4Pin	3.75	9.95	5.55	3.75
5Pin	5.00	11.20	6.80	5.00
6Pin	6.25	12.45	8.05	
7Pin	7.50	13.70	9.30	
8Pin	8.75	14.95	10.55	
9Pin	10.00	16.20	11.80	
10Pin	11.25	17.45	13.05	
11Pin	12.50	18.70	14.30	
12Pin	13.75	19.95	15.55	
13Pin	15.00	21.20	16.80	
14Pin	16.25	22.45	18.05	
15Pin	17.50	23.70	19.30	
16Pin	18.75	24.95	20.55	
17Pin	20.00	26.20	21.80	
18Pin	21.25	27.45	23.05	
19Pin	22.50	28.70	24.30	
20Pin	23.75	29.95	25.55	
21Pin	25.00	31.20	26.80	
22Pin	26.25	32.45	28.05	
23Pin	27.50	33.70	29.30	
24Pin	28.75	34.95	30.55	
25Pin	30.00	36.20	31.80	
26Pin	31.25	37.45	33.05	
27Pin	32.50	38.70	34.30	
28Pin	33.75	39.95	35.55	
29Pin	35.00	41.20	36.80	
30Pin	36.25	42.45	38.05	

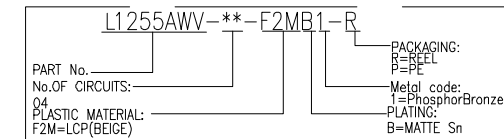
PCB LAYOUT



Main Specifications

- Poles: 02 to 30
- Contact resistance: $\leq 20m\ \Omega$
- Insulation resistance: $\geq 500M\ \Omega$
- Rated voltage: 150V AC DC
- Rated current: 1.0A AC DC
- Withstand Voltage: 500V AC/minute
- Temperature Range: $-40^{\circ}C \sim +120^{\circ}C$

ORDER INFORMATION:



LDCONN 东莞连大精密制品有限公司
 连大 DongGuan LianDa Precision Products Co., LTD

TITLE	1.25mm Pitch 180° Wafer SMT TYPE	DRAWN BY	LZM	11/28-'19
PART NO.	L1255AWV-XX-F2MB1-R	CHECKED BY		
DRAWING NO.		APPROVED BY		
SCALE	1:1	UNIT	mm	PAGE 1/1
				SIZE A4

STANDARD TOLERANCE (EXCEPT SPECIFIED)	
LINER	ANGLES
.0 ±0.30	0.° ±5°
.00 ±0.25	.0° ±2°
.000 ±0.10	.00° ±1°

ITEM	COMPONENT	Q'TY	MATERIAL	FINISH
C	SOLDER TAB	2 PCS	PhosphorBronze	MATTE Sn-plated
B	CONTACT	2~30 PCS	PhosphorBronze	MATTE Sn-plated
A	HOUSING	1 PCS	LCP	UL 94V-0, COLOR:BEIGE